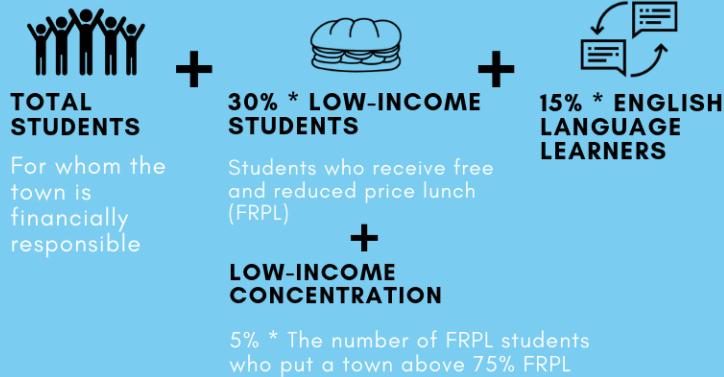


THE ECS FORMULA

MULTIPLY THE 3 CATEGORIES:

NEED STUDENTS THE WEIGHTED STUDENT COUNT



X

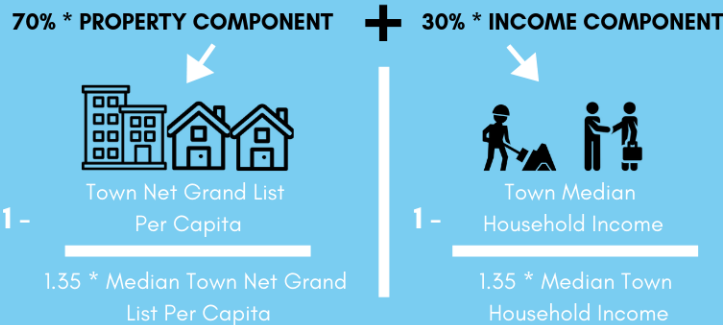


FOUNDATION AMOUNT
\$11,525

Estimated Cost of Educating a Student

X

STATE AID PERCENTAGE THE STATE'S SHARE OF EDUCATION COSTS



- EXCEPT THE AID PERCENTAGE IS NO LESS THAN 10% FOR ALLIANCE DISTRICTS AND NO LESS THAN 1% FOR ANY OTHER TOWN
- AND THE 19 LEAST-WEALTHY TOWNS RECEIVE AN ADDITIONAL 3 TO 6 PERCENTAGE POINTS (towns with a Public Investment Community Index over 300)

AND THEN ADD:



Town's Number of Students in Regional District

REGIONAL DISTRICT BONUS

If the Town Belongs to a Regional District

X

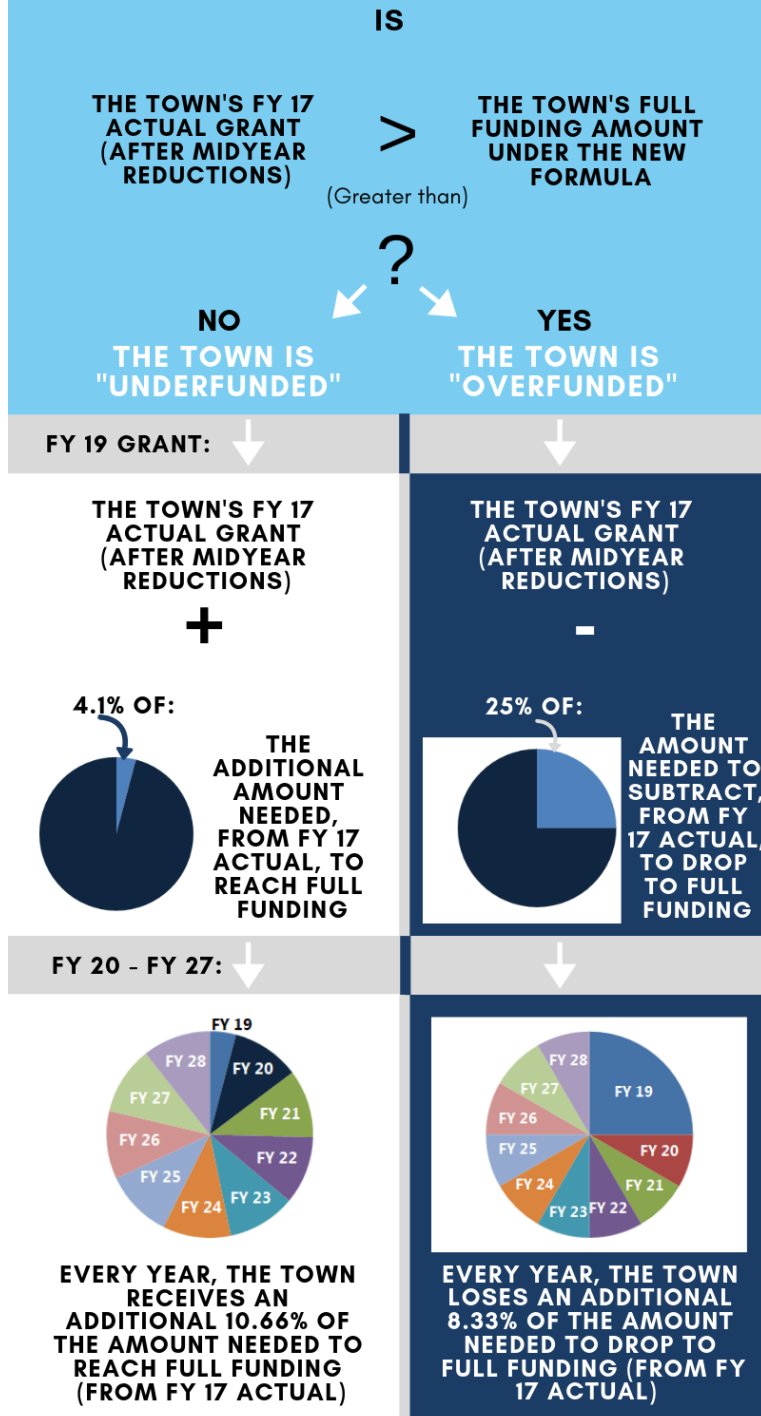
$[(\text{Number of Grades in Regional District}) / 13] * 100$

THE FORMULA PHASE-IN BEGINS IN FY 19.

See the next page

Office of Fiscal Analysis
Icons: Flaticon.com

THE ECS FORMULA PHASE-IN



THE FULL FUNDING AMOUNT CHANGES ANNUALLY TO REFLECT
UPDATED STUDENT AND TOWN DATA.

**IN FY 28, THE FORMULA IS FULLY PHASED-IN.
NO TOWN IS OVER- OR UNDER-FUNDED.**